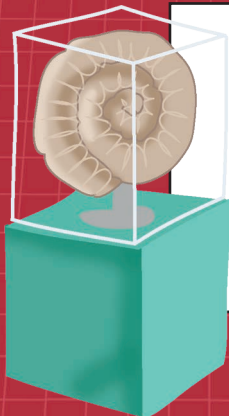




Museum Search

Circle each word from the list of things Freddy and Ellie saw—going across and diagonally (forward and backward) and up and down.

S	A	Q	N	A	E	S	S	G	I	T	K	Z	F	S
E	G	R	Y	S	K	U	F	V	N	Z	Q	I	N	H
S	M	L	T	O	B	F	T	X	R	U	S	A	Z	D
A	C	U	O	I	Q	U	L	A	Z	Q	L	I	B	M
V	D	B	M	C	F	H	I	J	T	P	G	V	E	I
M	U	M	M	Y	V	A	U	P	O	S	F	B	D	N
Q	H	A	F	I	E	F	C	H	E	E	D	D	I	A
F	M	P	B	A	O	I	S	T	Q	M	K	I	U	R
B	Q	I	O	S	Y	T	P	T	S	R	X	N	G	E
Z	L	O	S	C	F	H	G	A	K	S	F	O	R	Z
S	T	I	B	I	H	X	E	P	J	P	W	S	U	N
I	L	F	G	V	R	R	B	C	Q	P	A	A	O	O
S	G	E	P	A	I	N	T	I	N	G	S	U	T	M
L	A	F	R	Y	Q	Y	A	U	Q	K	H	R	K	E
M	A	Z	H	Q	Q	L	Z	G	Y	O	A	S	Z	B



DINOSAURS
STATUE
FOSSILS
VASES
PAINTINGS
BOOKS

MUMMY
GIFT SHOP
TOUR GUIDE
MAP
ARTIFACTS
EXHIBITS

